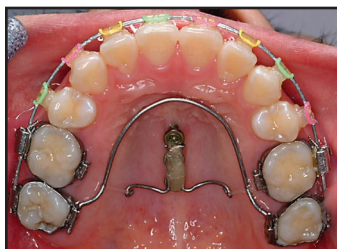


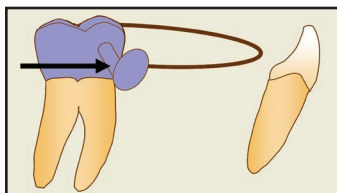


**The Cover**

The sequential MARA-Invisalign treatment described by Dr. Eckhart is illustrated on this month's cover.



**430 Palatal Locking Plate**



**439 MARA-Invisalign**



**463 Double-Tooth Anomalies**

**DEPARTMENTS**

The Editor's Corner . . . 425  
 Continuing Education . . 459  
 Contributors' Guide . . . 461  
 Classified. . . . . 470  
 JCO On the Web . . . . . 471  
 Product News . . . . . 473  
 Index of Advertisers . . . 475

**A Palatal Locking Plate Anchor for Orthodontic Tooth Movement**

YASOO WATANABE, DDS, PHD  
KEISUKE MIYAMOTO, DDS, PHD

A three-screw plate can provide skeletal anchorage for a wide variety of orthodontic movements.

**430**

**TECHNIQUE CLINIC**

**Conversion of a Rapid Palatal Expander to a Transpalatal Arch**

PETER PELLEGRINI, DDS, MS

This method eliminates the need for refitting.

**438**

**Sequential MARA-Invisalign Treatment**

JAMES E. ECKHART, DDS

The Mandibular Anterior Repositioning Appliance is used prior to Invisalign in a Class II adolescent patient.

**439**

**A Simple Method of Assessing Anteroposterior Skeletal Pattern from a Lateral Cephalogram**

JOSEPH H. NOAR, MSC, BDS, FDS RCS, DOrth RCS, ILTM  
AZAM AL-ASADY, BDS, MFDS RCS, MSC, MOrth  
HOWARD C. MOSELEY, BCHD, MSC FDS, MOrth, ILTM

The new Mount Vernon Index is compared to conventional cephalometric analyses.

**449**

**CASE REPORT**

**Treatment of an Isolated Vertical Infrabony Defect with Orthodontic Intrusion**

DANIELE MODONI, DDS  
MICHELE MODONI, DDS  
ALESSANDRO VERDINO, DDS  
ROBERTO DELI, MD, DDS

Orthodontic correction promotes the formation of a new attachment in this multidisciplinary case.

**453**

**Multidisciplinary Management of Double-Tooth Anomalies**

GIORGIO IODICE, DDS, PHD  
SERGIO PADUANO, MD  
IACOPO GIOFFI, DDS, PHD  
ANIELLO INGENITO, MD  
ROBERTO MARTINA, MD

A patient with a double tooth caused by diphodontic gemination is treated with a team approach.

**463**

The opinions expressed in the *Journal of Clinical Orthodontics* are those of the writers and do not necessarily reflect the opinions and policies of JCO. Copyright © 2009 JCO, Inc. *Journal of Clinical Orthodontics* (USPS 802-120, ISSN 0022-3875) is published monthly for \$235 per year (U.S. individual rate) by JCO, Inc., 1828 Pearl St., Boulder, CO 80302-5519. Periodicals postage paid at Boulder, CO, and additional mailing office. POSTMASTER: Send address changes to JCO, 1828 Pearl St., Boulder, CO 80302-5519. Phone: (303) 443-1720; e-mail: info@jco-online.com.